

How to... plant BULBS

Part of the Pacific Nurseries
'How to...' series

When to plant

Ideally from September to October when the soil is moist but still warm. Tulips may be planted into November.

How to plant bulbs

It is important to plant your bulbs at the right depth and spacing to avoid overcrowding. As a general rule, plant bulbs approximately twice the depth of the bulb and the same spacing apart. We sell long and short handled bulb planters as well as kneeling cushions to make it easier!

Reasons for failures

- Bulbs don't thrive if they are too wet - try planting on a bed of grit.
- Watch out for garden pests - squirrels eat bulbs. Slugs are also fond of bulbs.
- If you haven't had a good show of flowers it could be that you have overcrowded your display or cut the tops too soon. Leave them to die down and feed with bone meal after flowering.

Which compost?

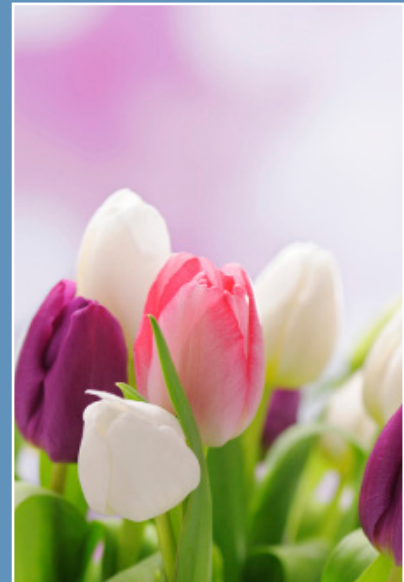
We recommend using Westland's Bulb Planting Compost with a sprinkling of bonemeal.

Good tips for successful displays

- Avoid planting in straight lines
- Drifts and clumps look more natural
- Remove dead flowers as this helps the bulbs develop for next year

Lasagne Planting

- Plant bulbs in layers according to size and flowering time.
- Try Tulips at the bottom, daffodils in the middle and crocus on top.
 - This will extend the flowering period and create a dramatic display.



Bulbs are a great way to add splashes of seasonal colour, year after year. Bulbs are perfect for planting in pots and borders to create all sorts of stunning displays.



The team at Pacific Nurseries is highly experienced. As plant growers and the supplier of thousands of plants to over 100 garden centres in the region, we are well placed to advise you on any of your gardening questions. Please ask us for any help you need.

Pacific Nurseries,
Chester Road, Streetly
0121 353 4017
www.pacificnurseries.co.uk

Pacific
NURSERIES